



Horia hands snatcher device



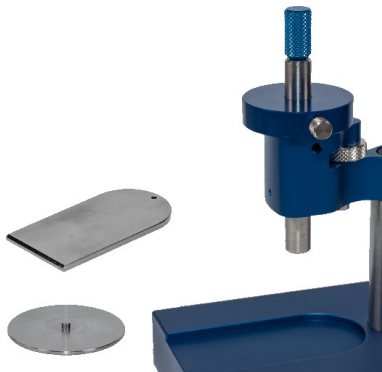
Item no.

HO-ARAI000

Horia Hands snatcher set, consist of 8x rods, 15x ferrules and 14x points.

Rods, ferrules and points are also available at retail

Horia 起针套装, 配有 8x 起针棒, 15x 套筒, 14x 顶针。
起针棒, 套筒, 顶针都可以单独购买。



Item no.

HO-ARAI501

Hands snatcher support, delivered with the 2 base plates, without spindle and without stop.

起针棒底座, 配有 2 块底板, 不包含起针棒

HO-ARAI000

Consists of 包含:



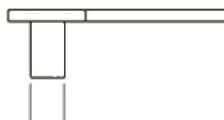
Tool for removing hands, includes 8 rods, caps in different colours, without ferrule and point

起针棒套装, 配有 8 支起针棒, 不同颜色的杆帽, 不包含套筒及顶针



Assortment of 15 ferrules for hands snatcher, screwed onto the handle of the tool, sizes from AR AI 03-001 ~ AR AI 03-015

15 个套筒套装，旋入式设计，尺寸由 AR AI 03-001 ~ AR AI 03-015

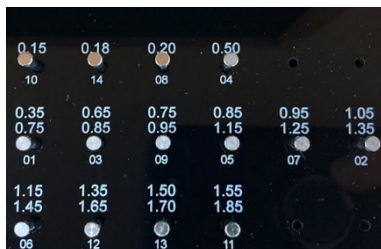


Ø ext. of the tube of the hand = Ø A of the ferrules

Ø 表针套管外径 = Ø A 套筒

ØA	ØB	C	Ep.	Référence
0.40	3.20	3.00	0.10	AR AI 03-18
0.40	3.20	2.40	0.10	AR AI 03-22
0.45	3.20	2.40	0.10	AR AI 03-19
0.50	3.20	2.40	0.10	AR AI 03-26
0.50	3.20	3.00	0.10	AR AI 03-13
0.55	3.20	2.50	0.10	AR AI 03-21
0.60	3.20	2.40	0.10	AR AI 03-23
0.60	3.20	3.00	0.10	AR AI 03-05
0.75	3.20	3.00	0.10	AR AI 03-06
0.85	3.20	3.00	0.10	AR AI 03-15
1.00	3.20	2.40	0.10	AR AI 03-24
1.00	3.20	3.00	0.10	AR AI 03-07
1.20	3.20	2.40	0.10	AR AI 03-25
1.20	3.20	3.00	0.10	AR AI 03-04
1.30	3.20	3.00	0.10	AR AI 03-03
1.40	3.20	3.00	0.10	AR AI 03-01
1.60	3.80	3.50	0.10	AR AI 03-08
1.65	5.00	3.00	0.10	AR AI 03-16
1.70	3.80	3.50	0.10	AR AI 03-20
1.80	3.80	3.50	0.10	AR AI 03-09
1.90	3.80	3.50	0.10	AR AI 03-02
2.15	4.60	3.50	0.15	AR AI 03-10
2.35	4.60	3.50	0.15	AR AI 03-11
2.55	4.60	4.00	0.15	AR AI 03-12
2.75	4.60	4.00	0.15	AR AI 03-14
2.75	4.60	4.00	0.15	AR AI 03-17 *

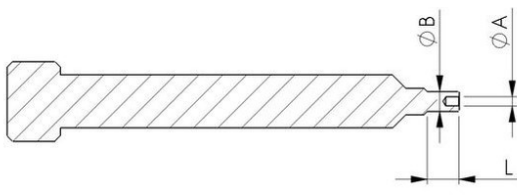
* Only compatible with point AR AI 04-18



Assortment of 14 points for hands snatcher, includes hollow points and full points, sizes from AR AI 04-01 ~ AR AI 04-14

14 支顶针套装, 包括中空及实心顶针, 尺寸由 AR AI 04-01 ~ AR AI 04-14

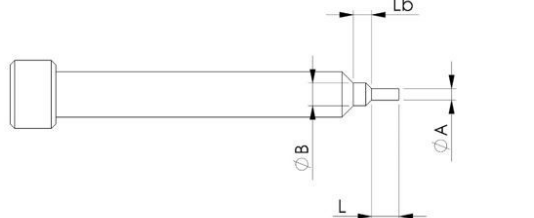
Hollow point



ØA	ØB	L	Référence
0.35	0.65	1.20	AR AI 04-28
0.35	0.75	1.20	AR AI 04-01
0.65	0.85	1.20	AR AI 04-03
0.75	0.95	1.20	AR AI 04-09
0.85	1.15	2.00	AR AI 04-05
0.90	1.45	2.50	AR AI 04-26
0.95	1.25	2.00	AR AI 04-07
1.05	1.35	1.20	AR AI 04-02
1.15	1.45	2.00	AR AI 04-06
1.32	1.55	1.20	AR AI 04-29
1.35	1.65	2.50	AR AI 04-12
1.50	1.70	2.50	AR AI 04-13
1.55	1.85	2.50	AR AI 04-11
1.80	2.00	15.00	AR AI 04-16
2.00	2.35	15.00	AR AI 04-18*

* Only compatible with AR AI 03-17 ferrule

Full point



ØA	ØB	L	Lb	Référence
0.15	1.50	0.80	1.20	AR AI 04-10
0.17	1.50	0.80	1.20	AR AI 04-19
0.18	1.50	0.80	1.20	AR AI 04-14
0.20	1.00	0.80	1.20	AR AI 04-08
0.22	1.00	0.80	1.20	AR AI 04-21
0.28	1.00	1.20	0.80	AR AI 04-22
0.35	1.00	1.20	0.80	AR AI 04-20
0.45	0.70	0.50	2.00	AR AI 04-27
0.45	1.00	1.20	0.80	AR AI 04-15
0.50	1.00	1.20	0.80	AR AI 04-04
0.60	1.00	1.20	0.80	AR AI 04-17*
1.00	1.50	1.20	0.80	AR AI 04-31*
1.20	1.50	1.20	0.80	AR AI 04-23*
1.40	1.50	1.20	0.80	AR AI 04-24*
1.60	-	1.20	-	AR AI 04-25*

* Concave tip