

## MOVEMENT HOLDERS

Movement holder, nickel-plated brass, base Ø 31 mm. Equipped with adjustable screws to support pivots and endstones, with and without pushers for control.

Compatible with presses MSA05.050, MSA05.100, MSA05.101, MSA05.109, MSA05.110, MSA05.111, MSA05.112, MSA05.114, MSA05.115, MSA05.116, MSA05.117, MSA05.129 and MSA05.131.



MSA	Calibre mm	Screws	Kg
08.010-02	4 1/4"	1	0.029
08.010-03	4 1/2"	1	0.029
08.010-48	4 3/4"	1	0.030
08.010-50	4 7/8"	1	0.077
08.010-05	5 1/2"	1	0.033
08.010-06	6 3/4"	1	0.038
08.010-08	7 3/4"	1	0.042
08.010-09	8"	1	0.042
08.010-10	8 1/4"	1	0.043
08.010-11	8 3/4"	1	0.046
08.010-12	9"	1	0.047
08.010-13	9 1/4"	1	0.049
08.010-14	9 3/4"	1	0.051
08.010-15	10 1/2"	1	0.055
08.010-22	11"	1	0.058
08.010-16	11 1/2"	1	0.061
08.010-17	11 3/4"	1	0.063
08.010-28	12"	1	0.065
08.010-32	12 1/4"	1	0.069
08.010-23	12 1/2"	1	0.068
08.010-67	12 3/4"	1	0.078
08.010-18	13"	1	0.071
08.010-19	13 1/4"	1	0.081
08.010-46	13 1/2"	1	0.083
08.010-36	13 3/4"	1	0.077
08.010-42	16"	1	0.100
08.010-45	16 1/2"	1	0.100

Round movement holder.



MSA	Calibre mm	Screws	Kg
08.010-27	3 3/4" x 6"	1	0.034
08.010-00	3 3/4" x 6 3/4" x 8"	1	0.034
08.010-04	5 1/2" x 6 3/4"	1	0.037
08.010-07	6 3/4" x 8"	1	0.040

Special shape movement holder.



(1)



(2)



MSA	Calibre	Screws	Kg
08.010-60	(1) 762 - 763	1	0.050
08.010-61	(2) 762 - 763	-	0.050

Special shape movement holder.

(1) With 1 adjustable screw for hands fitting.

(2) Without adjustable screw for removing stems.



MSA	Calibres	Screws	Kg
09.010-55	1002 - 1009	2	0.095

Round movement holder with 2 adjustable screws.



MSA	Calibres	Screws	Kg
09.017	3520.D - 3540.D	-	0.060

Round movement holder without adjustable screw.  
For removing stems.



MSA	Calibres	Screws	Pushers	Kg
09.018	3520.D - 3540.D	4	2	0.129

Round movement holder with 2 pushers and 4 adjustable screws.



MSA	Calibres	Screws	Kg
09.016-47	4002-B - 4003-B 4120-B - 4210-B 4220-B - 5010-B 5020-B - 5022-D 5030-D - 5040-B 5040-F - 5040-D 5050-B - 5050-C 5051-C - 5130-D	-	0.060

Round movement holder without adjustable screw.  
For removing stems.



MSA	Calibres	Screws	Pushers	Kg
09.010-47	4002-B - 4003-B 4120-B - 4210-B 4220-B - 5010-B 5020-B - 5022-D 5030-D - 5040-B 5040-D - 5050-B 5050-C - 5051-C 5130-B - 5130-D	4	2	0.170

Round movement holder with 2 pushers and 4 adjustable screws.



MSA	Calibre	Screws	Pushers	Kg
09.010-52	5040-F	4	5	0.160

Round movement holder with 5 pushers and 4 adjustable screws.

## MOVEMENT HOLDERS



MSA	Calibre	Screws	Pushers	Kg
09.010-62	8040.B	4	2	0.130

Round movement holder with 2 pushers and 4 adjustable screws.



MSA	Calibre	Screws	Pushers	Kg
09.010-63	057	1		0.042

Special shape movement holder with 1 adjustable screw.



MSA	Calibre	Screws	Pushers	Kg
09.010-64	Valjoux 72	4	2	0.090

Round movement holder with 2 pushers and 4 adjustable screws.



MSA	Calibres	Screws	Pushers	Kg
09.012	ZE 400 - 410 - 420 RX 4030	2	6	0.130

Round movement holder with 6 pushers and 2 adjustable screws.



MSA	Calibre	Screws	Pushers	Kg
09.010-58	FP 1180	4	3	0.079

Round movement holder with 3 pushers and 4 adjustable screws.



MSA	Calibre	Screws	Pushers	Kg
09.010-39	DD 2025	1	2	0.089

Round movement holder with 2 pushers and 1 adjustable screw.



MSA	Calibre	Screws	Pushers	Kg
09.010-33	2084	1	2	0.070
09.010-29	251471	1	2	0.070
09.010-30	2884	1	2	0.093
09.010-34	5030R	1	2	0.070

Round movement holder with 2 pushers and 1 adjustable screw.



MSA	Calibre	Screws	Pushers	Kg
09.010-35	2892-A2	4	4	0.088

Round movement holder with 4 pushers and 4 adjustable screws.



MSA	Calibre	Screws	Pushers	Kg
09.010-40	2894-2	4	2	0.070

Round movement holder with 2 pushers and 4 adjustable screws.



MSA	Calibre	Screws	Kg
09.010-38	UNITAS 6497 - 6498	2	0.102

Round movement holder with 2 adjustable screws.



MSA	Calibre	Screws	Kg
09.010-41	7001	2	0.062

Round movement holder with 2 adjustable screws.



MSA	Calibre	Screws	Pushers	Kg
09.010-20	Valjoux 7750	2	2	0.087

Round movement holder with 2 pushers and 2 adjustable screws.

**Spare part :**

MSA	Item	Kg
09.010-20-V	Adjustable screw	0.001

## MOVEMENT HOLDERS



MSA	Calibre	Screws	Pushers	Kg
09.010-59	Valjoux 7750	4	2	0.092

Round movement holder with 2 pushers and 4 adjustable screws.



MSA	Calibres	Screws	Pushers	Kg
09.006	7750 - 7751 - 7753	5	3	0.114

Round movement holder with 3 pushers and 5 adjustable screws.



MSA	Calibres	Screws	Pushers	Kg
09.011	Valjoux 7750 - 7753	4	6	0.125

Round movement holder with 6 pushers and 4 adjustable screws.

### Spare parts :

MSA	Item	Kg
09.011-P	Pusher	0.001
09.011-V	Central adjustable screw	0.001



MSA	Calibre	Screws	Pushers	Kg
09.010-21	251262	4	4	0.090

Round movement holder with 4 pushers and 4 adjustable screws.



MSA	Calibre	Screws	Pushers	Kg
09.010-68	251471	4	2	0.090

Round movement holder with 2 pushers and 4 adjustable screws.



MSA	Calibres	Screws	Kg
09.010-43	PUW 111 - 282001	1	0.045

Special shape movement holder with 1 adjustable screw.



MSA	Calibre	Screws		Kg
09.010-54	980163	1		0.064

Special shape movement holder with 1 adjustable screw.



MSA	Calibre	Screws	Pushers	Kg
09.007	ETA A07	5	4	0.130

Round movement holder with 4 pushers and 5 adjustable screws.



MSA	Calibres	Screws	Pushers	Kg
09.010-44	G10211 - G10711	4	2	0.095

Round movement holder with 2 pushers and 4 adjustable screws.



MSA	Calibre	Screws	Pushers	Kg
09.010-63	G15211	4	2	0.101

Round movement holder with 2 pushers and 4 adjustable screws.

## MOVEMENT HOLDERS

### Aluminium movement holders.



MSA	Calibre	Kg
09.010-31	OM 861	0.022

Round anodized aluminium movement holder.



MSA	Calibre	Kg
09.010-37	OM 1045	0.004

Round anodized aluminium movement holder with space for 2 pushers.



MSA	Calibres	Kg
09.010-24	2135	0.073
09.010-25	3035	0.023
09.010-26	1570	0.035

Anodized aluminium round movement holder with an adjustable central screw for supporting pivots and endstones.

### Plastic movement holders.



MSA	Calibres	Kg
09.050-02	2824 11 1/2"	0.014
09.050-01	7750 13 1/4"	0.015

Green plastic movement holder.  
Other calibres upon request.



Reversible movement holders with button.



MSA	Calibres <sup>mm</sup>	Kg
09.020-00	3 3/4" x 6"	0.016
09.021	3 3/4" x 8"	0.022
09.020-06	5 1/2" x 6 3/4"	0.012
09.020-07	6 3/4" x 8"	0.013

Nickel-plated brass reversible movement holder with button, special shape.



MSA	Calibres <sup>mm</sup>	Kg
09.020-05	5 1/2"	0.007
09.020-08	7 1/2"	0.014
09.020-08	7 3/4"	0.010
09.020-11	8 3/4"	0.010
09.020-12	9"	0.015
09.020-13	9 1/4"	0.015
09.020-10	9 1/2"	0.015
09.020-15	10 1/2"	0.015
09.020-25	11 1/4"	0.035
09.020-16	11 1/2"	0.023
09.020-18	12"	0.028
09.020-17	12 1/4"	0.020
09.020-20	12 1/2"	0.020
09.020-22	13 1/4"	0.022
09.020-26	13 1/2"	0.025
09.020-23	13 3/4"	0.026
09.020-27	15"	0.030
09.020-28	16"	0.035
09.020-24	16 1/2"	0.047

Nickel-plated brass reversible round movement holder with button.



MSA	Calibres <sup>mm</sup>	Kg
09.015-08	7 3/4"	0.015
09.015-11	8 3/4"	0.015
09.015-15	10 1/2"	0.016
09.015-16	11 1/2"	0.016
09.015-20	12 1/2"	0.018
09.015-22	13 1/4"	0.020
09.015-24	16 1/2"	0.024

Plexiglas reversible round movement holder with button.



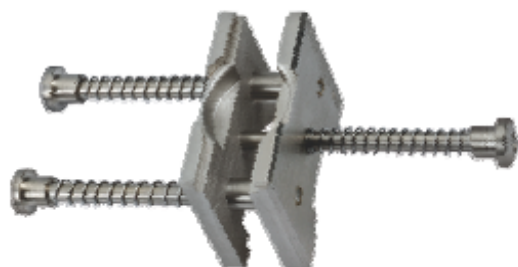
MSA	Calibre	Pushers	Kg
09.020-21	Valjoux 7750	4	0.041

Nickel-plated brass reversible round movement holder with button and 4 pushers.



## MOVEMENT HOLDERS

### Extensible and reversible movement holders.



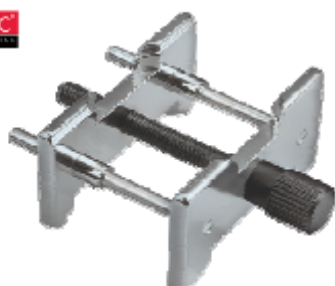
MSA	Calibres ""	Size	Kg
09.002	3 3/4" ... 12 1/2"	60 x 25 mm	0.025

Nickel-plated brass extensible and reversible movement holder with springs.



MSA	Calibres ""	Size	Kg
09.003	3 3/4" ... 11"	40 x 25 mm	0.032

Extensible and reversible steel movement holder with screw, 3 3/4" ... 11".



MSA	Calibres ""	Size	Kg
09.004	8 3/4" ... 13"	50 x 37 mm	0.042

Extensible and reversible steel movement holder with screw.



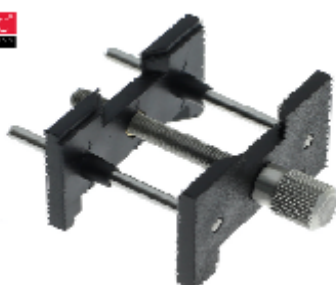
MSA	Size	Kg
09.005	75 x 50 mm	0.138

Extensible and reversible steel movement holder with screw for pocket watches.



MSA	Calibre $^{\circ}$	Size	Kg
09.103	3 3/4" ... 11"	55 x 25 mm	0.027

Extensible and reversible synthetic movement holder with screw.  
Tightening on external  $\varnothing$  12... 30 mm.



MSA	Calibre $^{\circ}$	Size	Kg
09.104	8 3/4" ... 19"	55 x 38 mm	0.028

Extensible and reversible synthetic movement holder with screw.  
Tightening on external  $\varnothing$  30... 48 mm.

Assortment of plastic movement holders.



See chapter **PERF.**